

Integrated **Travel and Expense** Management

The benefits of a connection solution

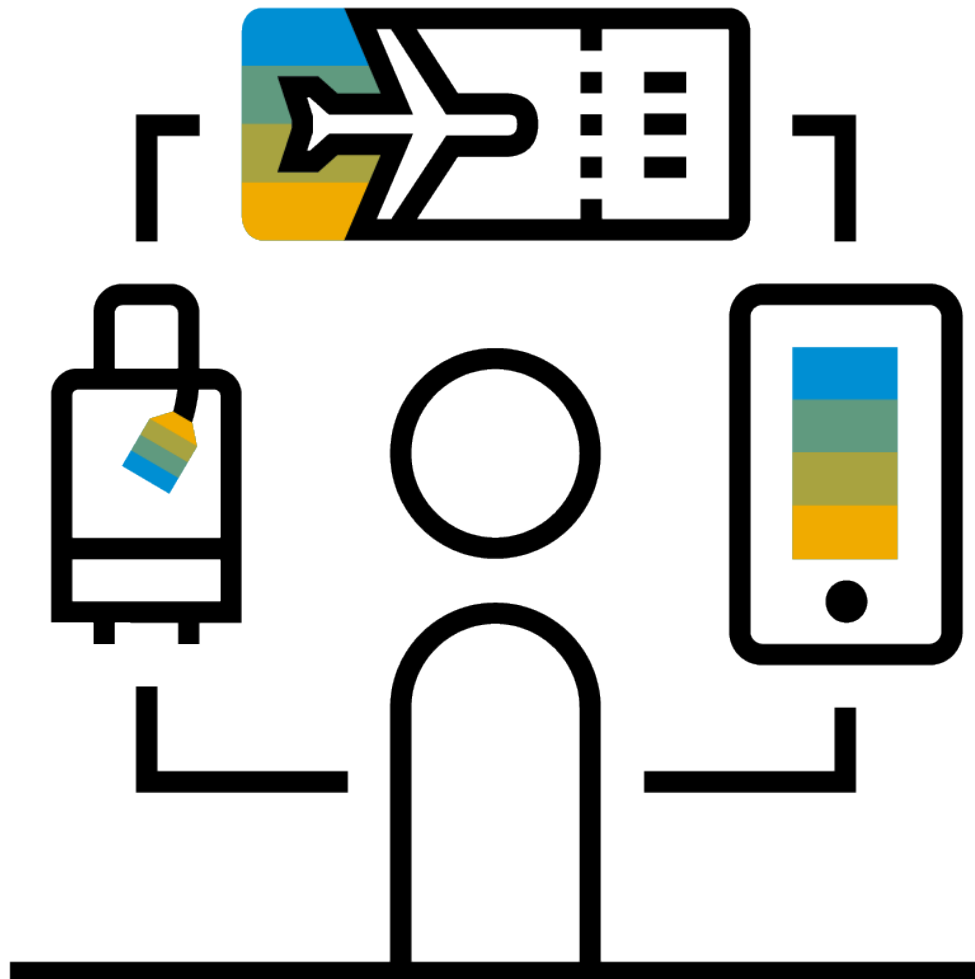


Table of Contents

- 3** Introduction
- 4** What Does Connected Travel and Expense Look Like?
- 5** What Are The Benefits of Integration?
- 6** What Can I Do About It?

Introduction

Most employees travel for business. They could be attending an industry conference, meeting international colleagues or visiting a client. As a result, they will incur expenses that need to be reimbursed once they return from their business trip. Travel and expenses are intrinsically linked. So, why manage them separately?

Businesses have not always seen a connection between travel and expense (T&E) management. But since the majority of expense line items are a result of business travel, companies are increasingly considering the use of one solution to cover both processes.

When you combine T&E, some questions are easier to answer:

- Are expense claims aligned to my travel policy?
- Where can I find a full picture of T&E spend?
- Can I reclaim some international VAT?

To integrate T&E management, businesses usually look for software that can manage both processes from beginning to end. This is commonly referred to as an end-to-end solution.

The term end-to-end is used in the context of business performance. The premise is that any business process can be improved if unnecessary stages are removed. The results could be cost savings, faster delivery or even increases in customer or user satisfaction.

Since the majority of expense line items are a result of business travel, companies are increasingly considering the use of one solution to cover both processes.

What Does Connected Travel and Expense Look Like?

In the case of Travel and Expense management, the process begins when the need for a business trip is identified. It ends when the employee returns home and their expenses are reimbursed.

The complexity of T&E management within your company will depend on a number of factors including company size, number of employees, office locations and general need for employees to travel.

With an integrated solution, a typical business trip follows these stages:

- **Request:** The need for the business trip and costs involved will be discussed between the employee and manager.
- **Authorise:** A manager reviews the purpose and potential cost of the business trip before authorising the trip.
- **Book:** The employee books the trip using an online booking tool.
- **Travel:** The employee takes the trip and incurs expenses.
- **Reclaim:** After the trip, the employee submits an expense claim.
- **Approve:** The claim is checked and approved prior to being paid.
- **Reimburse:** The employee is paid.
- **Analyse:** The business can analyse T&E data to make sure expenses comply with a variety of government legislation, company policy and to negotiate discounts with preferred suppliers.

By integrating and automating the entire end-to-end process, you can save time and money without compromising on compliance.

“It’s not always easy to persuade senior management that T&E is a high priority but when you consider between **7% and 10% of an average company’s budget relates to T&E expenses**, the argument becomes more compelling.”

Aberdeen Group

What Are the Benefits of Integration?

Integrated T&E solutions offer a number of benefits, for your business and for your employees. Cost savings, increased compliance and an improved experience for employees when travelling is just the beginning.

COST SAVINGS

Integrated travel and expense management helps you see what is being spent, where and when. You can decide when employees need to seek approval for their business trips and set customised spending limits. By capturing T&E data in one place, you can spot cost saving opportunities more easily.

INCREASED COMPLIANCE

By incorporating your company policy into your T&E solution, everyone involved in the end-to-end process can identify compliant travel options. Using reporting tools, you can see spot common issues and educate employees to prevent future non-compliant spend.

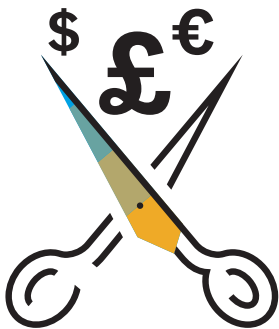
IMPROVED EXPERIENCE

With SAP® Concur®, expense claims automatically populate as employees are on their business trip. Travel alerts make the trip run smoothly reminding employees when it's time to check in or if their flight is delayed. The ability to photograph receipts with the mobile app and e-receipt management saves them time while giving you access to reliable data.

Before T&E Integration	After T&E Integration
Complex booking process	Simplified booking process
Disparate information	One source of information
Costly booking and supplier fees	Reduced booking and supplier fees
Minimal policy compliance	Increased policy compliance
Lack of spend visibility	Improved spend visibility
Misinformed decisions	Informed decisions
Dissatisfied employees	Satisfied employees

“Companies using an automated expense solution have **reduced the cost** of each expense claim transaction **by more than 75%** and have **50% lower processing costs** than others who are still using manual processes.”

Aberdeen Group



What Can I Do About It?

If your business is still grappling with separate travel and expense processes, it's time to consider a new way of working. Everyone can benefit from a simplified, integrated, end-to-end process.

SAP Concur is not a one-size-fits-all solution. We work with you to understand your challenges so we can implement a solution that is personalised to your travel and expense policy and delivers the results you want and need.

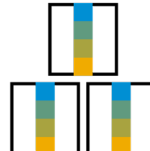
By integrating T&E management with SAP Concur, you can:



Improve the experience for employees



Capture direct bookings and "leakage"



Identify preferred suppliers for better negotiations



Analyse a number of reports from your T&E spend

"SAP Concur's automated expense product provided the 'giant leap' forward we needed to make. **Our claims system is now simple, fast and intuitive**, and users can 'self-select' cost-effective travel opportunities to save time and money at every level."

Travel and Expense Manager, University of Nottingham



LEARN MORE

Considering integrated travel and expense management?
visit concur.co.uk/travel-booking to learn more.

ABOUT SAP CONCUR

SAP® Concur® is the world's leading provider of integrated travel, expense, and invoice management solutions, driven by a relentless pursuit to simplify and automate these everyday processes. With SAP Concur solutions, a top-rated app guides employees through every trip, charges are effortlessly populated into expense reports, and invoice approvals are automated. By integrating near-real-time data and using AI to audit 100% of transactions, businesses can see exactly what they're spending without worrying about blind spots in the budget. SAP Concur solutions eliminate yesterday's tedious tasks, makes today's work easier, and help businesses run at their best every day. Learn more at concur.co.uk or the [SAP Concur blog](#).

Follow SAP Concur



Learn more at concur.co.uk

WP The benefits of an end-to-end solution enUK (19/10)

© 2019 SAP SE or an SAP affiliate company. All rights reserved.

No part of this publication may be reproduced or transmitted in any form or for any purpose without the express permission of SAP SE or an SAP affiliate company.

The information contained herein may be changed without prior notice. Some software products marketed by SAP SE and its distributors contain proprietary software components of other software vendors. National product specifications may vary.

These materials are provided by SAP SE or an SAP affiliate company for informational purposes only, without representation or warranty of any kind, and SAP or its affiliated companies shall not be liable for errors or omissions with respect to the materials. The only warranties for SAP or SAP affiliate company products and services are those that are set forth in the express warranty statements accompanying such products and services, if any. Nothing herein should be construed as constituting an additional warranty.

In particular, SAP SE or its affiliated companies have no obligation to pursue any course of business outlined in this document or any related presentation, or to develop or release any functionality mentioned therein. This document, or any related presentation, and SAP SE's or its affiliated companies' strategy and possible future developments, products, and/or platforms, directions, and functionality are all subject to change and may be changed by SAP SE or its affiliated companies at any time for any reason without notice. The information in this document is not a commitment, promise, or legal obligation to deliver any material, code, or functionality. All forward-looking statements are subject to various risks and uncertainties that could cause actual results to differ materially from expectations. Readers are cautioned not to place undue reliance on these forward-looking statements, and they should not be relied upon in making purchasing decisions.

SAP and other SAP products and services mentioned herein as well as their respective logos are trademarks or registered trademarks of SAP SE (or an SAP affiliate company) in Germany and other countries. All other product and service names mentioned are the trademarks of their respective companies.

See www.sap.com/copyright for additional trademark information and notices.