



Going Greener:

Quick Tips for Sustainable Travel

Travel is headed in a new direction, and it's not only good for business, it's good for the planet. Sustainability – from fuel-efficient nonstop flights to electric ground transportation to virtual meetings – is on business travelers' minds as they start to peer out from behind the pandemic.

What are they considering?



97% of corporate travelers would

increase their journey time if it significantly reduced environmental impact.¹



80% of business travelers are more

inclined to work for an organization with a sustainability policy.¹



69% of Travel Managers have

updated travel guidelines or policies to have a greater focus on sustainability.²

Getting to this level of sustainability means building policies, practices and, most importantly, choices into your travel and expense program. And by digitally connecting your data across the entire spending process, SAP® Concur® solutions helps refine that strategy – making sustainability foundational to your program and a critical part of your broader social responsibility plan.

“[SAP Concur] enabled us to go completely paperless and increase our green footprint which is one of our company's core values.”

– [User role, 1/13/2020](#)



It starts by giving your business travelers easier ways to make sustainable choices, and these solutions will take you there.

Concur Travel:

- **Highlight sustainable options and green partners with custom fields**, so when employees are booking travel, they can quickly pick the most sustainable choice. You can even set policy parameters based on distance, location – even the type of aircraft being used.
- **Guide employees toward greener travel before, during, and after their trip.** Should they rent a hybrid car? Does a same-day trip make more sense? Could the meeting be held virtually? Show them the impact:

Taking the train from London to Paris reduces emissions by 96% as compared to flying.

- **Use personalized messaging to explain your company's sustainable initiatives**, helping employees understand that it's not about not traveling, it's about traveling smarter.



Concur Request:

- **Use powerful rules-based engines**, such as Audit Rules, Workflow Rules, and Booking Switch Rules to proactively guide employees through compliant options. Configure rules to meet your unique needs. For example, if the departure and destination of a flight are both within France, you can require the employee to request a train ticket.
- **Enhance sustainability aspects of your entire employee spend program**, making sure travel and expense policies are aligned and respected while offering a seamless end-to-end experience.

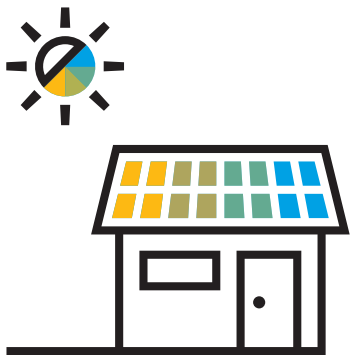


Concur Intelligence:

Dive deeper into your analytics and get insights into carbon emissions, top destinations, green suppliers, business traveler practices, and spending behaviors. Reports come right to your inbox, so you get a clear and accurate picture of your organization's footprint, and you can take immediate action.

Triplt from Concur:

Show employees their individual travel footprint and give them practical options for offsetting their impact.



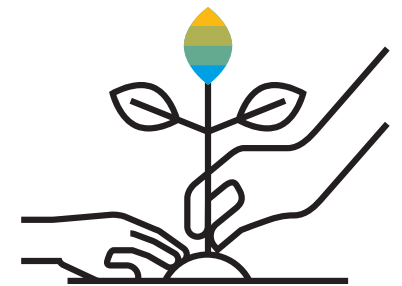


Concur Expense:

Use electronic receipts to go paperless and cut miles of paperwork out of the process. Transactions from hotels, taxis, trains, airlines, and other preferred suppliers go straight into expense reports – so resources aren't wasted, including time spent filling out/shipping expense reports, and physical office space used for processing and storage. You can even integrate carbon-offset expense types into your program and link them to your offset program provider.

Partner Ecosystem:

Connect to greener integration partners across our App Center – including [Jet-Set-Offset](#) and other air, rail, ground, and eco-lodging providers. Or go beyond travel and expense to find suppliers who can support you at all levels of your corporate social responsibility strategy.



You don't have to get there overnight.

Sustainable travel is a significant and ongoing endeavor. It isn't going to happen immediately. SAP Concur solutions help you move at the pace that's right for you, and you can create different settings for each country, region, or user group – so it works how you need it where you need.

For more information, talk to an SAP Concur representative or visit concur.com/sustainable-travel



© 2021 SAP SE or an SAP affiliate company. All rights reserved.

No part of this publication may be reproduced or transmitted in any form or for any purpose without the express permission of SAP SE or an SAP affiliate company.

These materials are provided for information only and are subject to change without notice. SAP or its affiliated companies shall not be liable for errors or omissions with respect to the materials.

SAP and other SAP products and services mentioned herein as well as their respective logos are trademarks or registered trademarks of SAP SE (or an SAP affiliate company) in Germany and other countries. All other product and service names mentioned are the trademarks of their respective companies. See www.sap.com/trademark for additional trademark information and notices.